



CHINA CONNECTED

April 5, 2024

China Branch Mills China Weeks Mills South China
Village Village Village Village

Where little villages come together

Do you know the difference between municipal roads, state roads, state aid roads and private roads? Municipal roads are maintained by municipal (town) tax dollars. The town is responsible for keeping our municipal roads in good repair and removing snow and ice during the winter. State roads are maintained by the State of Maine. State roads that run through China are Route 3, Route 32 (Windsor and Vassalboro Roads), Route 202 (Lakeview Drive) and Route 137 (Albion and Waterville Roads). Main Street, Stanley Hill Road and the Neck Road from the intersection with Stanley Hill Road toward China Village are also State roads. These last three roads along with the Vassalboro Road are State aid roads which means the town is responsible for plowing these roads in the winter, and the state reimburses the town otherwise all repair and maintenance of these roads falls to the State. Private roads in China are noted with blue street signs. All maintenance on these roads is the responsibility of the property owners who use the roads. Some of these roads have a road association while many others don't.

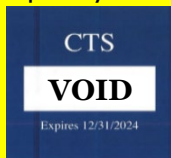
Did you know the State of Maine sets the speed limits on municipal roads? The town has received several questions about the removal of speed limit signs on China's municipal roads. The public works employees discovered many of our municipal roads were improperly marked. The DOT mapviewer shows speed limits and other interesting information. Here's the link - <https://www.maine.gov/mdot/mapviewer/>. If you need to contact the State Department of Transportation (DOT), please call (207) 624-3000 or use this link <https://www.maine.gov/mdot/contact/>. The State is set to review how speed limits are assigned. Once the limits are established, we will install the correct signage on our roads. Additionally, as the weather improves, the speed signs will be out and the deputy sheriffs will be patrolling municipal roads.

Becky Hapgood
becky@chinamaine.org

THINK SPRING!!

Have you purchased your new Transfer Station access permit??

Each vehicle entering the Transfer Station is required to have an access permit. Permits are \$2.00 each. Please return your placard(s) to the Town Office when obtaining the new permit. To view the TS Access Permit policy please visit www.china.govoffice.com under ordinances, policies & orders.



All Municipal Services will be closed Monday, April 15th in honor of Patriots' Day

Doris L. Young Scholarship Applications are due by May 1st!

Any China resident under 25 attending college who meets the qualifications may apply. The application and more information can be found at china.govoffice.com under administration/town clerk.

Prescription Drug Take Back Day
Saturday, April 27, 2023
10am-2pm
China Transfer Station

TextMyGov

March's winner of the Hannaford gift card for signing up for all four notifications is Tamara Sheaff. Congratulations!



- For Town Notifications Text "CHINANOTIFYME" to 91896
- For Emergency Notifications Text "CHINAEMERGENCY" to 91896
- For Event Notifications Text "CHINAFUN" to 91896
- For Board Meetings Text CHINAMEETINGS to 91896

Attention all China Residents!
Secure Paper Shredding Event
Saturday, May 4th 9am-1pm
China Public Works - 211 Alder Park Rd

Ask Us Anything!

Have you ever had a question about our community you wanted to ask but were too shy? I bet others from town may have the same question. Readers may submit a question and we will publish the question and answer in a future issue of the CC. This will be totally anonymous! All questions may be sent to jen@chinamaine.org by email or by text. Your question may help another China resident so don't be afraid to ask us!

Question: My questions for the town are concerning solar fields. Have they researched the longevity of the solar panels? Where do they dispose of them? As hazardous waste? Is the land under them safe or contaminated?

Answer: Solar photovoltaic capture technology is older than most of us today. The first commercially viable silicon photovoltaic cell was invented in 1954 at Bell Labs, with only 4% efficiency. Today's panels are typically in the 20% efficiency range, while performance degradation occurs between 0.5-1% of that 20% figure annually. Even going with the upper end of 1% degradation rate over 25 years still leaves the panel operating at 15% efficiency.

On the topic of potentially hazardous waste, it comes down to the materials used in the solder and the semiconductor, such as lead and/or cadmium. To be classified as Hazardous Waste, it would have to fail the EPA's Toxicity Characteristic Leaching Procedure. There were 30,000 tons of photovoltaic waste in 2021, but we can quickly compare that to the 750 million tons of fly ash waste produced by coal power in 2022. There is also a method for recycling more than 80% of the silicon-based panel's weight that involves removal of the aluminum frame and junction boxes, then utilizing flat glass recyclers to break the module down to be used as glass for the building and automotive industries.

Finally, the land underneath would not be exposed to contamination any more than a flagpole or an electronic sign, and the site developers are required to invest in mitigation studies on the impact on local resources and implementing measures for stormwater and phosphorus runoff.

For more information visit [epa.gov/hw/end-life-solar-panels-regulations-and-management](https://www.epa.gov/hw/end-life-solar-panels-regulations-and-management).

In closing, I want to sincerely thank you for asking these questions and subsequently educating everyone on the subject. After all, everyone deserves to be heard and discussions are an integral part of community development.

Code Guy Corner

Amidst the tree lines and lawn edges The Mud Monster has been plotting its annual campaign of gunk and seems stronger than ever. We sit upon the precipice of *dun dun DUN!* Mud Season. We've already experienced four precipitation events (greater than 1") since January 1st with another looming soon even as I write this.

Nothing says springtime quite like a patch of goop that swallows a shoe while you're walking! Nom nom. Mud Monster, Devourer of Soles. Let this be a reminder to not drive on lawn areas or off the edge of pavement if you can help it. Most importantly, stay far away from anything septic-related as you may very quickly find yourself dealing with more than just mud.

This time of the year is especially conducive for spotting drainage issues, and to make the most of it, grab a camera or a phone and snap some pictures to chronicle the problem(s). As the saying goes, "A picture is worth...thousands of dollars in repairs?" Maybe I heard that wrong, but I have seen plenty of examples. With those photos in hand, you can then compare them to when the Mud Monster has been defeated to prevent the expansion of the Mud Kingdom in the future. If you need to bring materials in, Earth-moving in the Shoreland District requires a CEO Permit and don't forget to contact Dig Safe whenever you need to break ground.

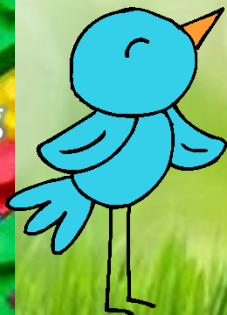
Nick French
ceo@chinamaine.org

The South China Community Church offers a \$10 breakfast every 2nd Saturday of the month 8am-10:30am! Breakfast includes sausage and gravy with biscuits, bacon, eggs, pancakes, muffins, tater tots, fruit, pastries, coffee and juice.

246 Village Street, China
FMI call Diane at
207-399-6359



The Albert Church Brown Memorial Library is starting a Lego Club! Please visit www.chinalibrary.org for more info.



The Town of China is offering an E911 sign displaying your house number. Who is funding this, you ask? The project was approved by voters at the June 14, 2022 Election, Article 31, to use up to \$38,000 of ARPA funds to purchase the signs for China residents. Order forms are available at the town office and online at www.china.govoffice.com. Forms can be returned to the town office, mailed or emailed to info@chinamaine.org.

One sign per residence. Once the funding is exhausted, the project ends so please order soon. Orders will be combined to create bulk orders for cost reduction therefore it may take several weeks to receive the sign. Installation of the sign is the property owner's responsibility. You will be notified when your sign is available to be picked up at the China Town Office during normal business hours. Any questions please contact the office at 207-445-2014 X3.

1234